

A woman with long blonde hair, wearing a grey tank top and grey pants, is sitting on a wooden pier. She is smiling and looking back over her shoulder at the camera. The background shows a sandy beach, the ocean with waves, and a clear blue sky. The sun is bright, creating a warm, golden light.

HERE,  
NATURE  
IS YOUR HOME.



**THERE IS NO DOUBT THIS IS THE BEST LOCATION IN PUNTA DEL ESTE, A  
PROJECT DESIGNED BY PRESTIGIOUS MRA+A FIRM, RESPONSIBLE FOR  
TIBURÓN TOWER.**

RESPECTING NATURE, MERGING ITS INDOORS WITH THE OUTDOORS AT THE  
MAXIMUM. ALL THIS MAKES SURFSIDE A PARADIGM OF LIFESTYLE BEYOND  
ANY EXPECTATIONS RAISED BY PUNTA DEL ESTE.



# SURFSIDE

An aerial photograph of a surfer riding a large, curling wave. The water is a deep blue-green, and the wave's crest is white with foam. The surfer is a small figure on the left side of the wave. The word "SURFSIDE" is written in large, bold, white capital letters across the center of the image.







# **SURFSIDE VILLAGE**1. HERE, NATURE IS YOUR HOME.

**Overlooking two fronts towards the immensity of the sea and Maldonado Stream up to the hills so that each tower has a unique and unmatched viewpoint on nature.**

An ever-changing landscape. Thought out and designed by Mario Roberto Álvarez Architects for people feeling that the sea plays an important role in their adventure of life and wish to enjoy it in every conceivable way. Nestled amid 8 hectares of land on the easternmost curve of La Brava Beach, at the mouth of La Barra.

Here, nature lives together with design and comfort creating a unique environment striking the right balance between nature and architecture.









# APARTMENTS

**All apartments open up to ample terraces so that living indoors or outdoors is always an enjoyable experience.**

The design, finishings and modulated creativity of all rooms increase the attractiveness of this project manifold.

The surrounding gardens create meeting places and natural havens for enjoyment.

The ample rooms and designed modularity multiply the physical and visual dimensions creating unique moments.













# LOBBY

## **An immediate immersion in nature, Surfside Village1®.**

The entrance hall blends with the lifestyle of the residents, impacting on and clearly showing a careful design and functionality of the whole.









# AMENITIES

**Everything. That is right. Everything that can make family life more enjoyable:**

swimming-pools looking onto diverse natural settings, gardens, state-of-the-art gym, dry and wet sauna, yoga classes, artificial waves to train all the year round, tennis court, private rooms with special equipment for parties or meetings and latest generation cinemas.









# LANDSCAPING

## **Surfside Village takes particular care of its surrounding environment.**

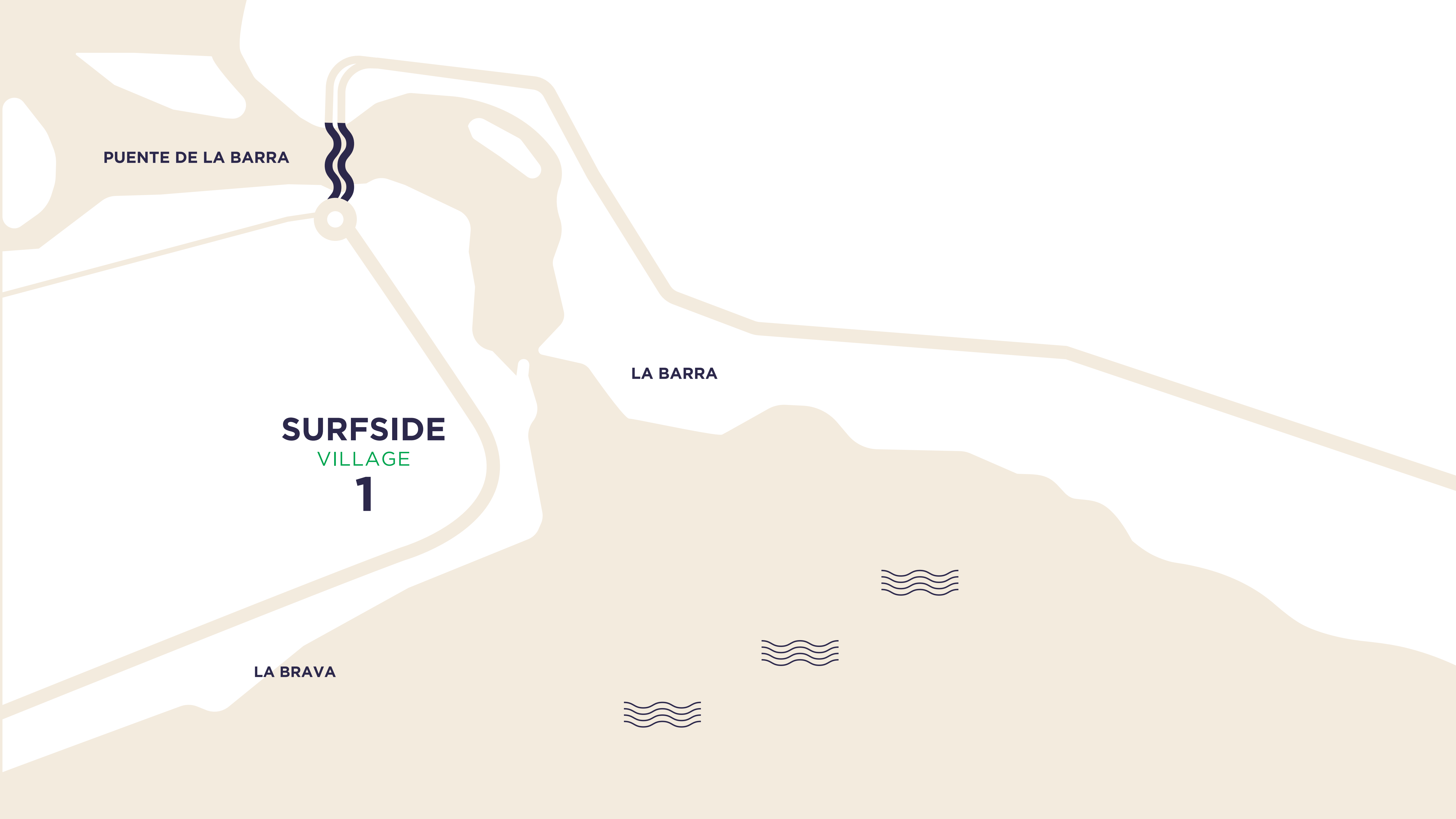
Green spaces, with active and tropical flora, designed and developed exclusively for nature to be always present and inviting residents to live it out.











PUENTE DE LA BARRA

**SURFSIDE**  
VILLAGE  
**1**

LA BARRA

LA BRAVA







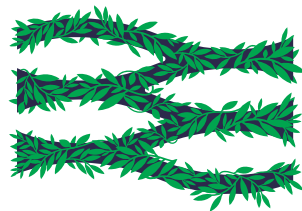


FLOORS





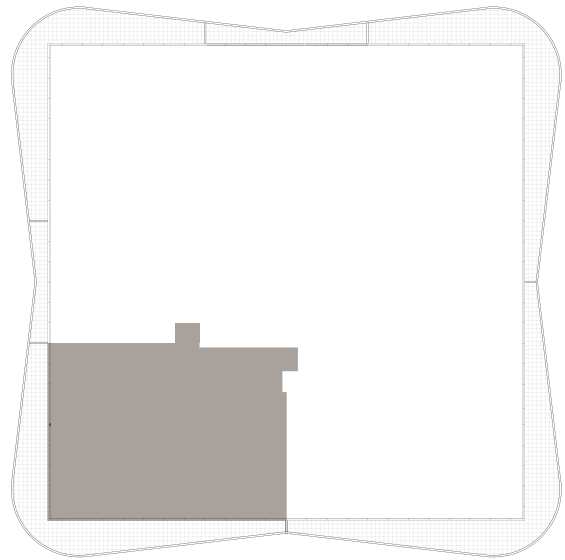
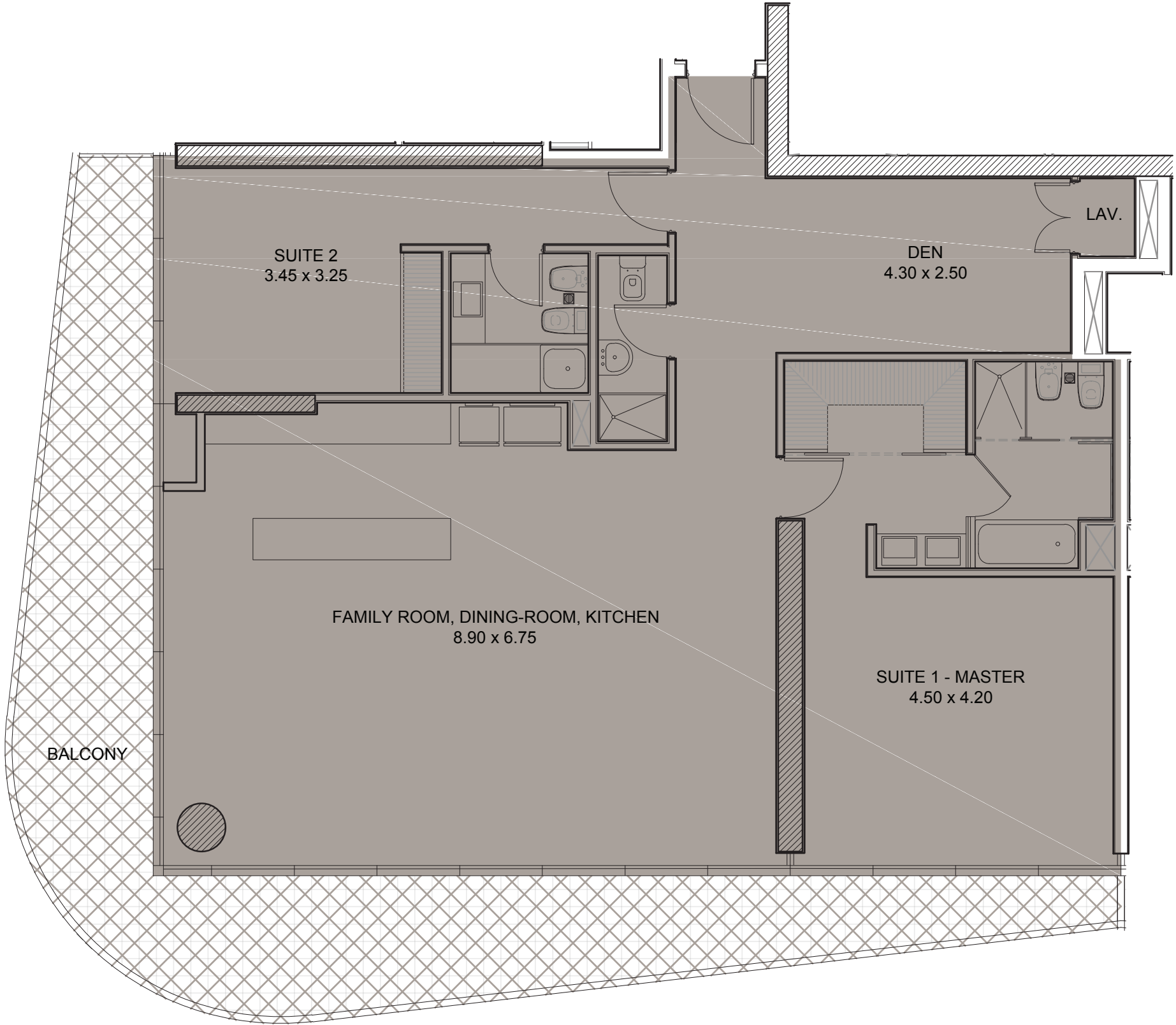
FLOOR  
01



COVERED SURFACE  
146.09m<sup>2</sup>

BALCONY SURFACE  
41.23m<sup>2</sup>

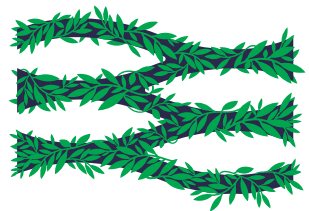
TOTAL SURFACE  
187.32m<sup>2</sup>



The drawings, specifications and modifications on the plans are the property of Estudio Mario Roberto Álvarez y Asociados. No drawing may be copied either totally or partially without the previous authorization of Estudio Mario Roberto Álvarez y Asociados. These drawings may be subject to changes in the project.



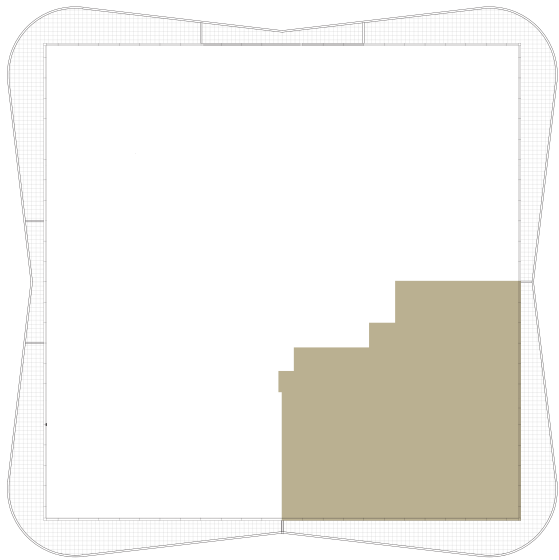
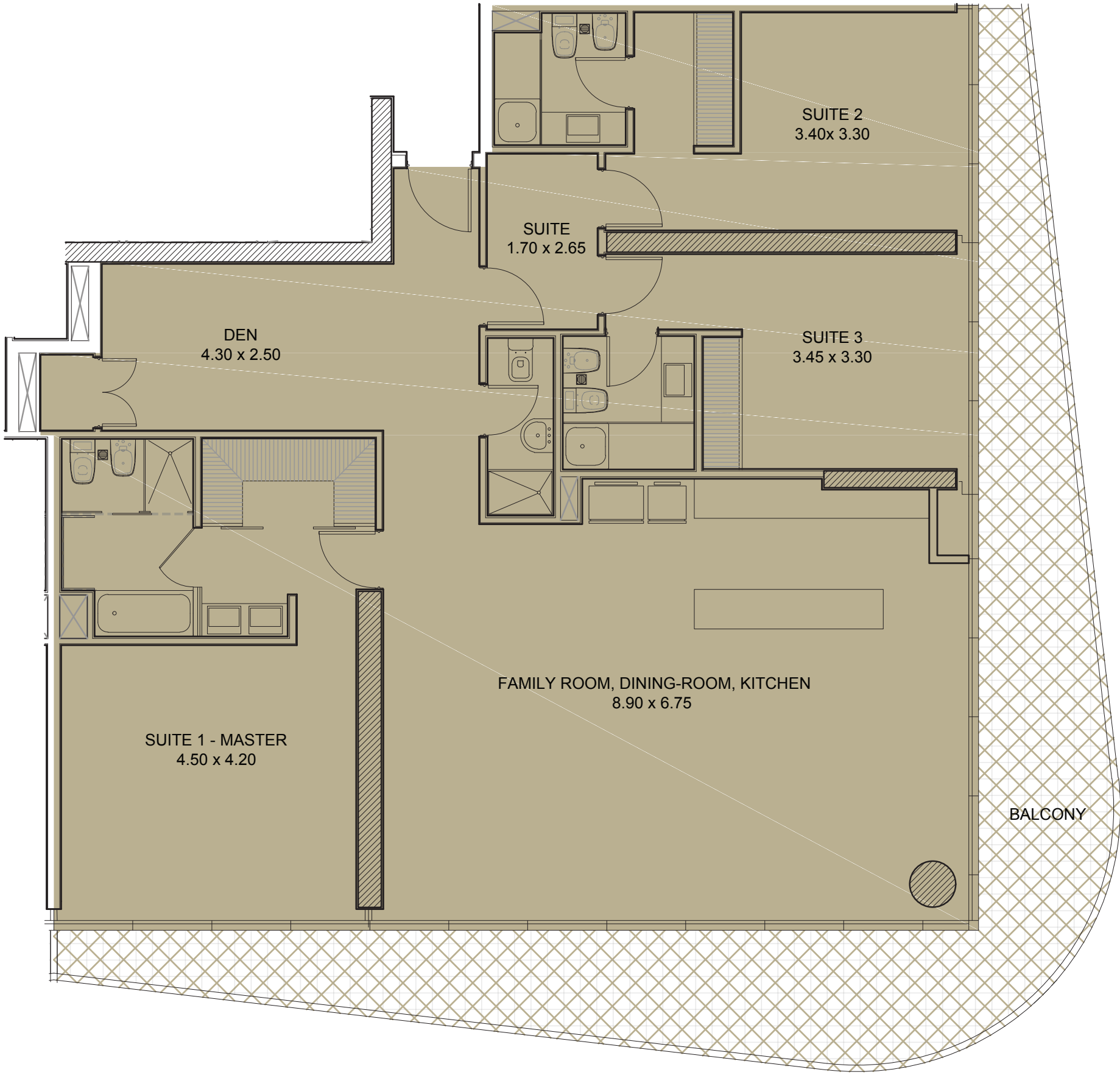
FLOOR  
02



COVERED SURFACE  
172.88m2

BALCONY SURFACE  
44.80m2

TOTAL SURFACE  
217.68m2



The drawings, specifications and modifications on the plans are the property of Estudio Mario Roberto Álvarez y Asociados. No drawing may be copied either totally or partially without the previous authorization of Estudio Mario Roberto Álvarez y Asociados. These drawings may be subject to changes in the project.



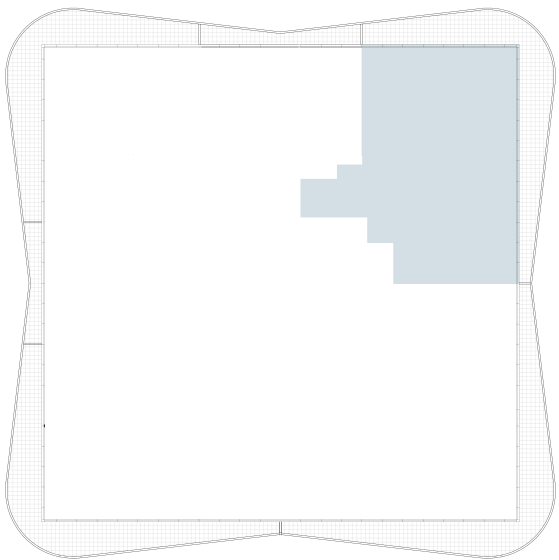
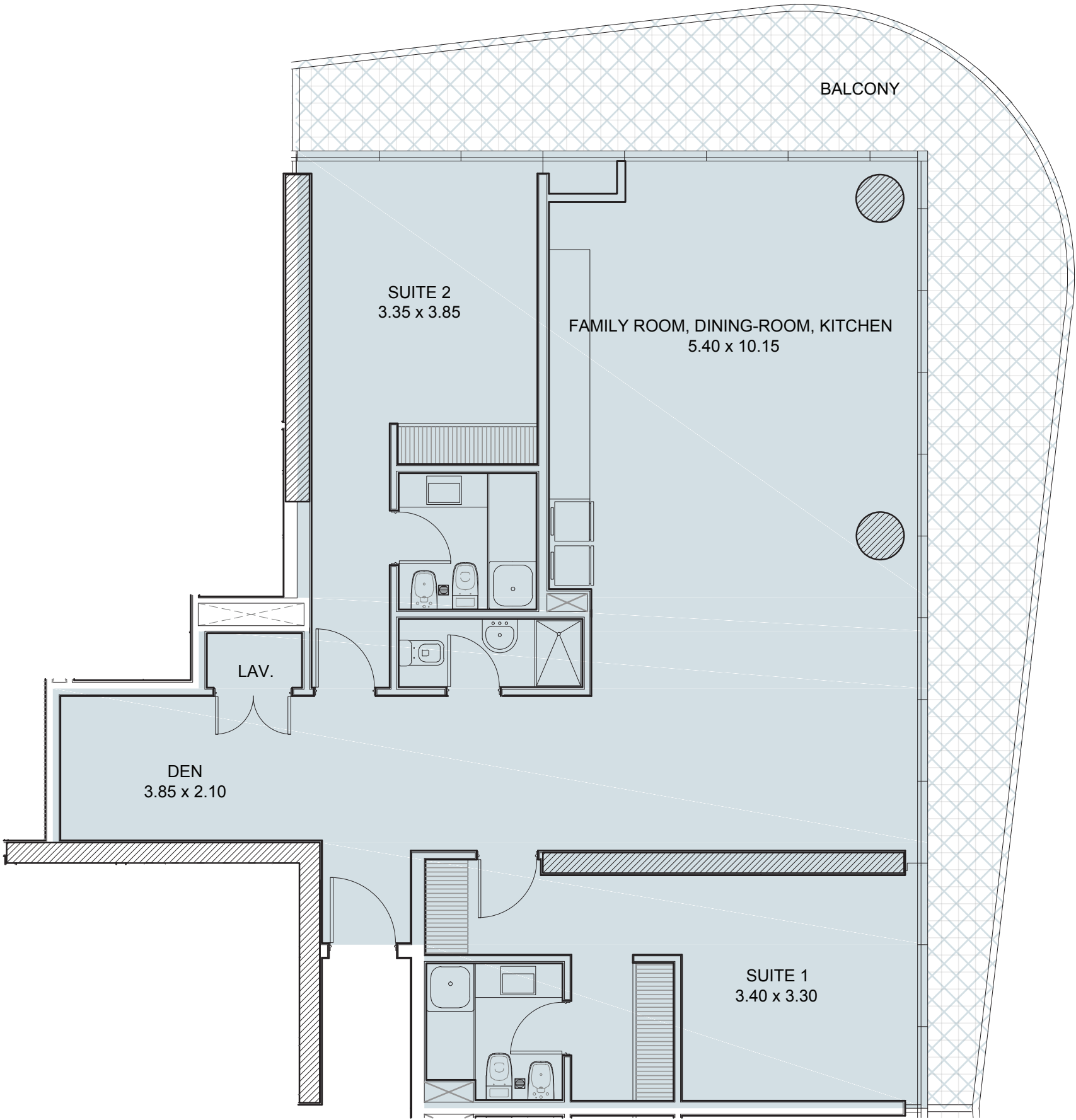
FLOOR  
03



COVERED SURFACE  
134.25m<sup>2</sup>

BALCONY SURFACE  
39.88m<sup>2</sup>

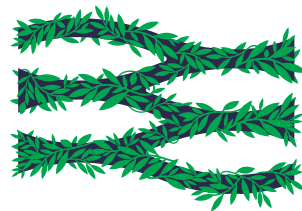
TOTAL SURFACE  
174.13m<sup>2</sup>



The drawings, specifications and modifications on the plans are the property of Estudio Mario Roberto Álvarez y Asociados. No drawing may be copied either totally or partially without the previous authorization of Estudio Mario Roberto Álvarez y Asociados. These drawings may be subject to changes in the project.



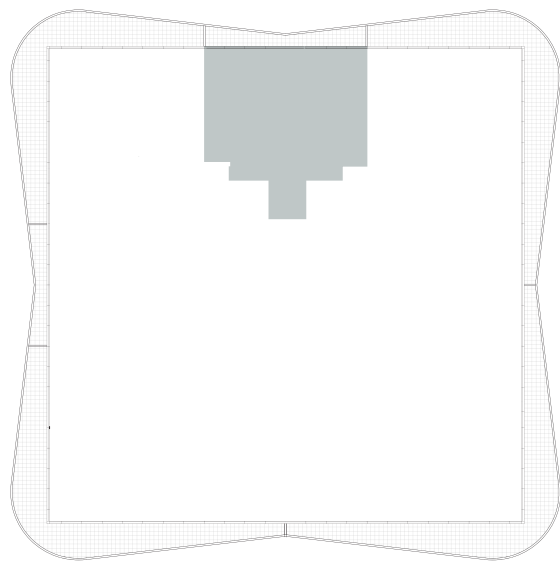
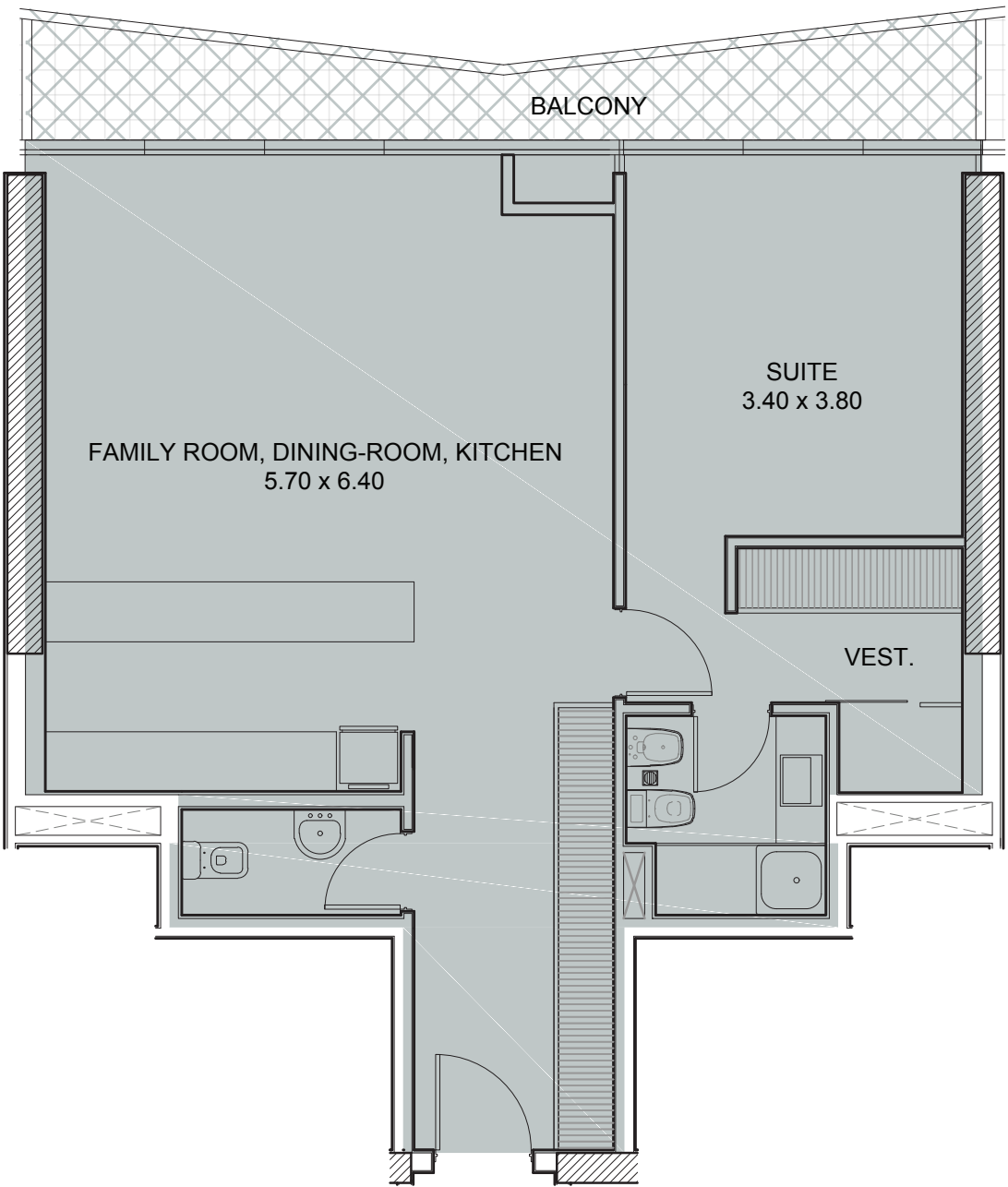
FLOOR  
04



COVERED SURFACE  
76.82m<sup>2</sup>

BALCONY SURFACE  
9.84m<sup>2</sup>

TOTAL SURFACE  
86.66m<sup>2</sup>



The drawings, specifications and modifications on the plans are the property of Estudio Mario Roberto Álvarez y Asociados. No drawing may be copied either totally or partially without the previous authorization of Estudio Mario Roberto Álvarez y Asociados. These drawings may be subject to changes in the project.



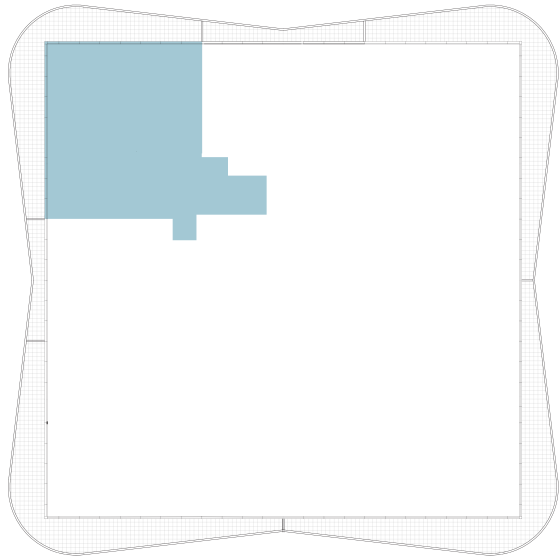
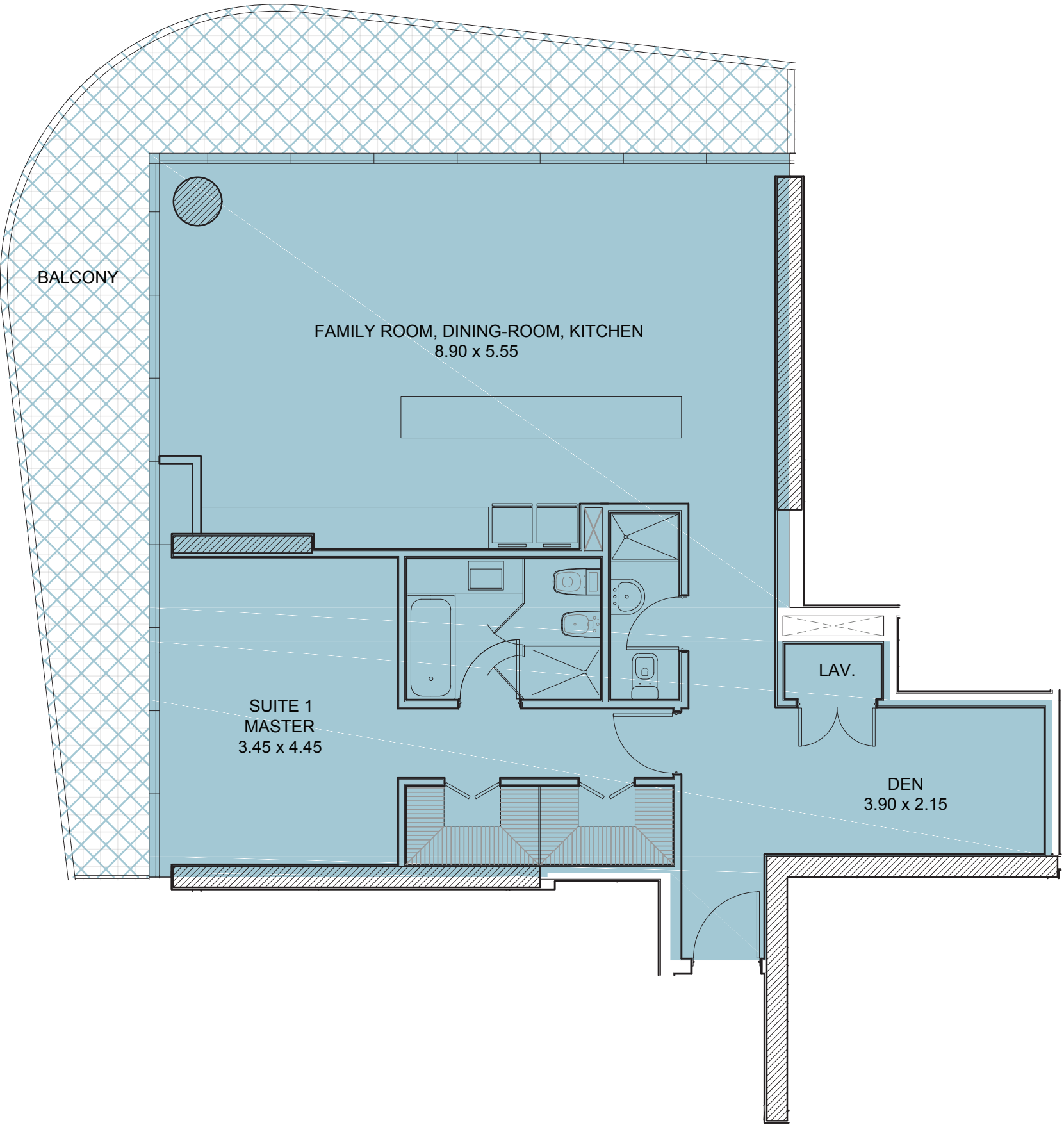
FLOOR  
05



COVERED SURFACE  
107.82m2

BALCONY SURFACE  
36.43m2

TOTAL SURFACE  
144.25m2



The drawings, specifications and modifications on the plans are the property of Estudio Mario Roberto Álvarez y Asociados. No drawing may be copied either totally or partially without the previous authorization of Estudio Mario Roberto Álvarez y Asociados. These drawings may be subject to changes in the project.



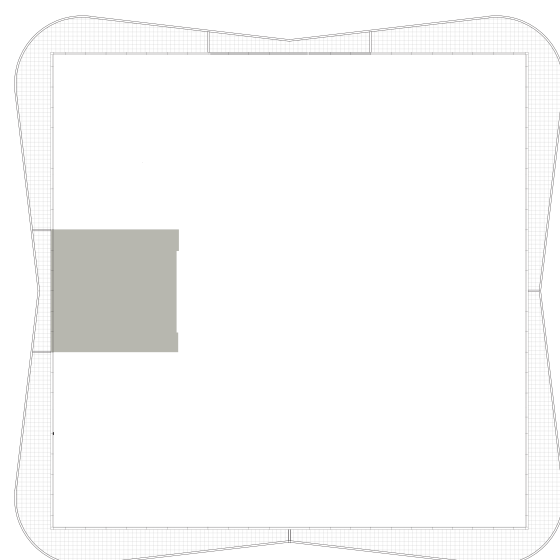
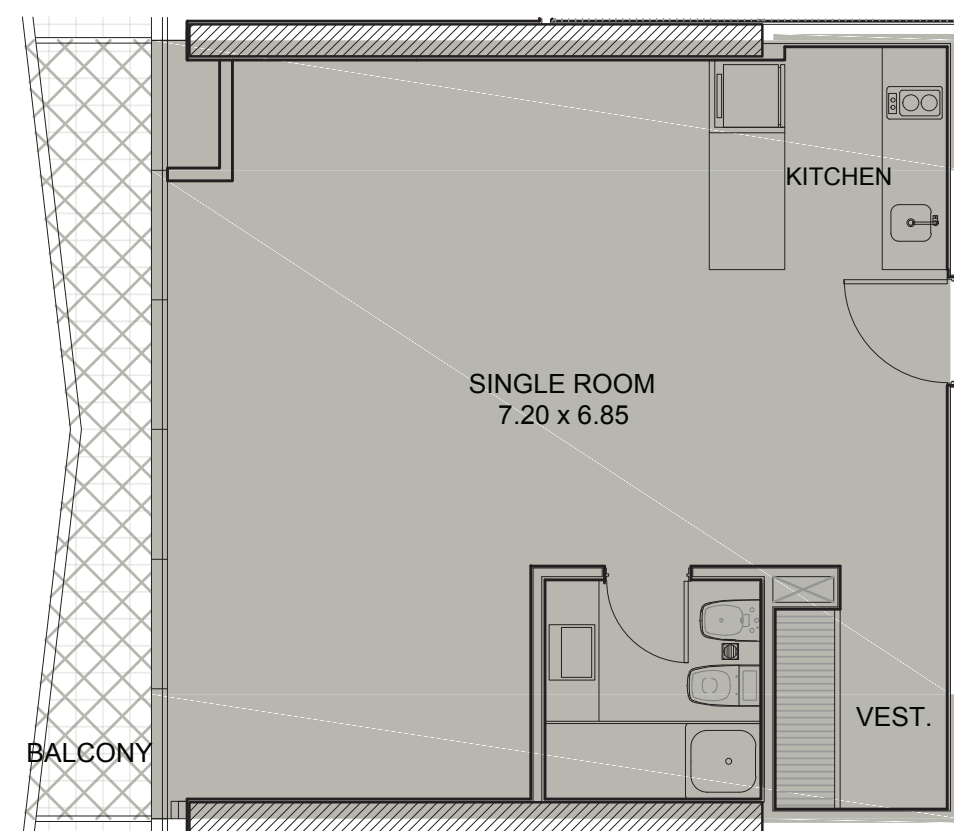
**FLOOR**  
**06**



**COVERED SURFACE**  
53.66m2

**BALCONY SURFACE**  
6.91m2

**TOTAL SURFACE**  
60.57m2



The drawings, specifications and modifications on the plans are the property of Estudio Mario Roberto Álvarez y Asociados. No drawing may be copied either totally or partially without the previous authorization of Estudio Mario Roberto Álvarez y Asociados. These drawings may be subject to changes in the project.



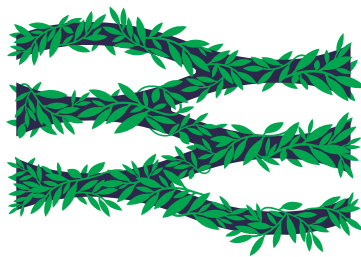
SPONSORED BY

  
**PRINCESS**  
CRAFTED IN PLYMOUTH, ENGLAND





STANDARD FLOOR









**MRA+A**  
MARIO ROBERTO ALVAREZ Y ASOCIADOS  
ALVAREZ - BERNABO - SABATINI  
**ARQUITECTOS**







COMERCIALIZA



**+(598) 97 70 7000**

[info@surfsidepunta.com](mailto:info@surfsidepunta.com)





**Etcheverrito.**





PUNTA DEL ESTE

**SURFSIDE**

VILLAGE

**1**